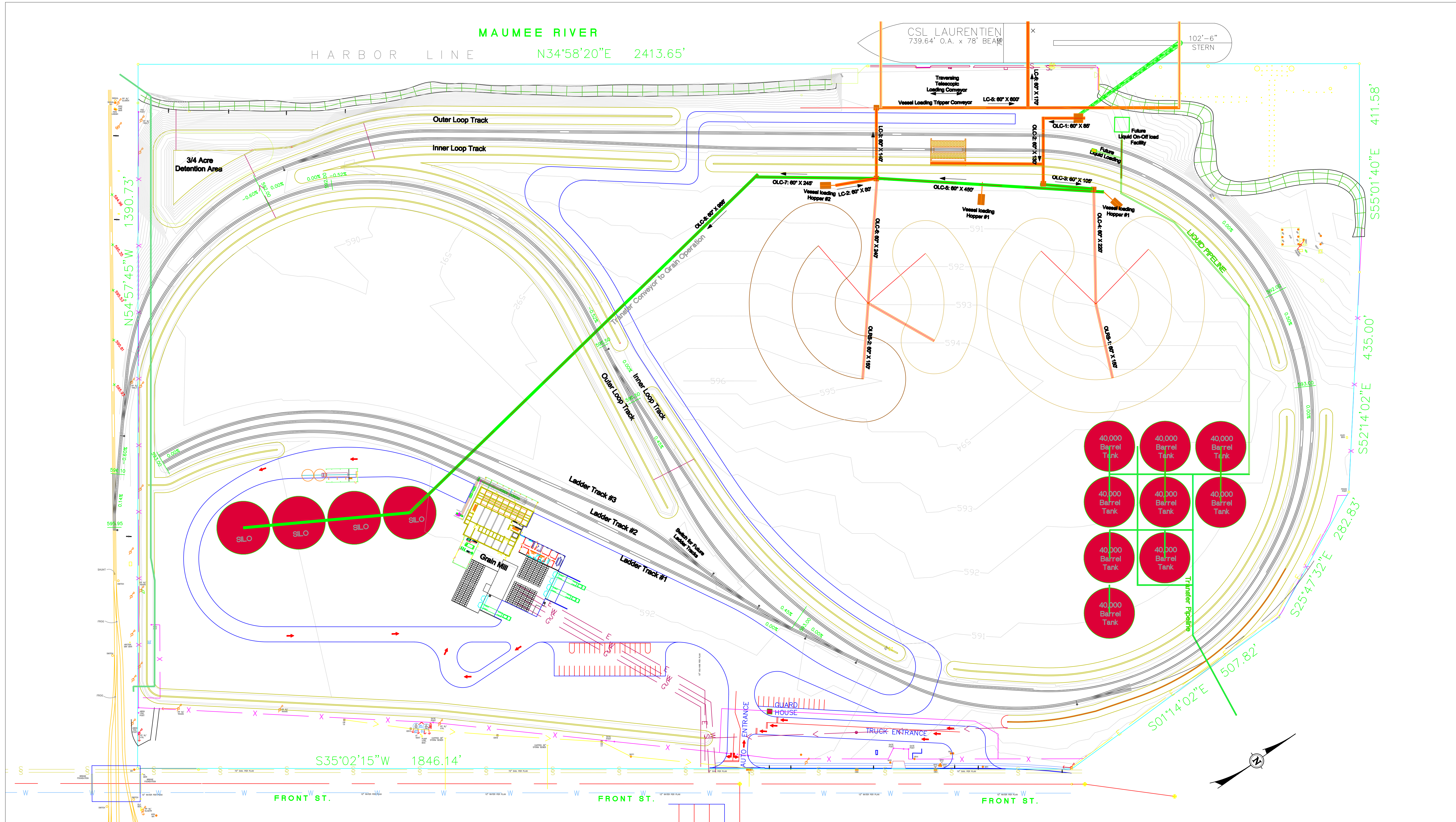


MAUMEE RIVER

HARBOR LINE N34°58'20"E 2413.65'



Revisions:
7-27-09 DJL

AME Technologies, LLC
 Wauseon, OH
 989-255-0597
 ametech@msn.com
 David J. Lange, PE

Midwest Terminals of Toledo
 Ironville Multi-Modal Facility
 Site Plan -
 Grading & Drainage Design

Drawn By: DJL Date: July 13, 2009
 Scale: 1"=100' DWG NO.: IVT-RD-091 SHEET 1 of 4

**Proposed Rail to Serve
 the Ironville Facility.**

2935 Front Street
 Toledo, Ohio 43605
 Lucas County